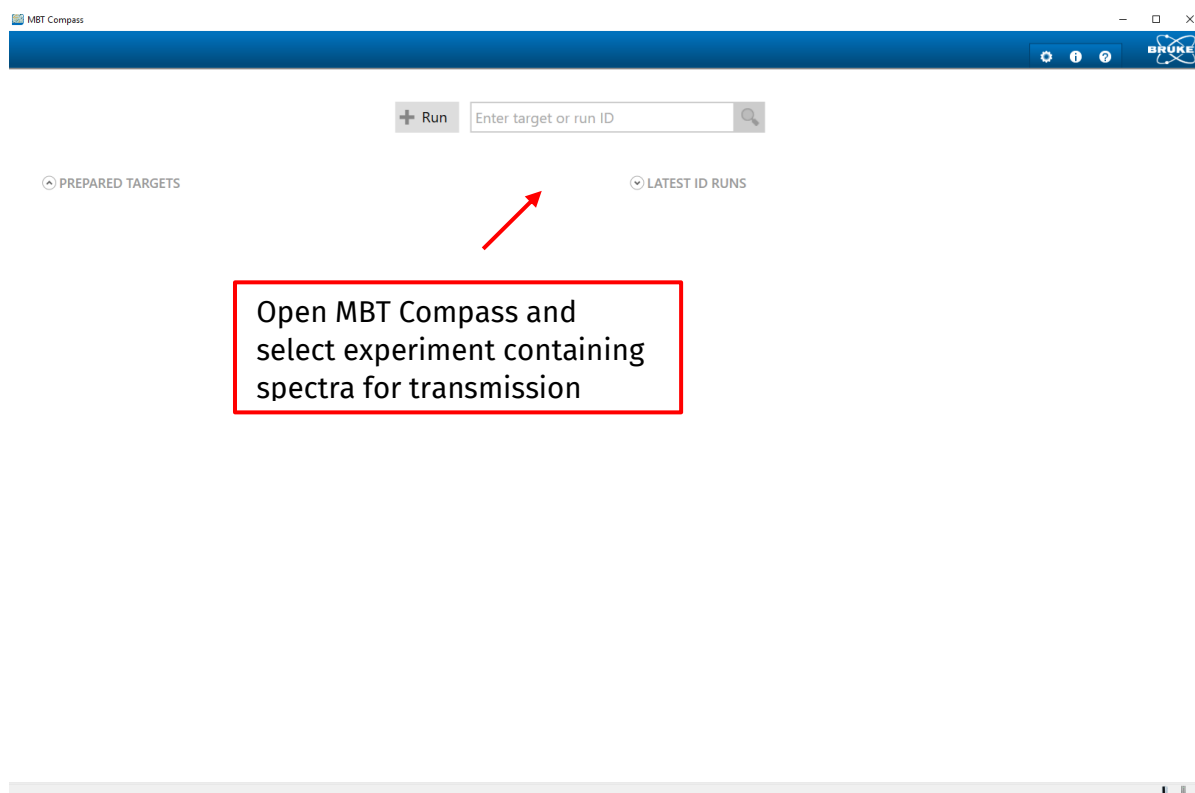


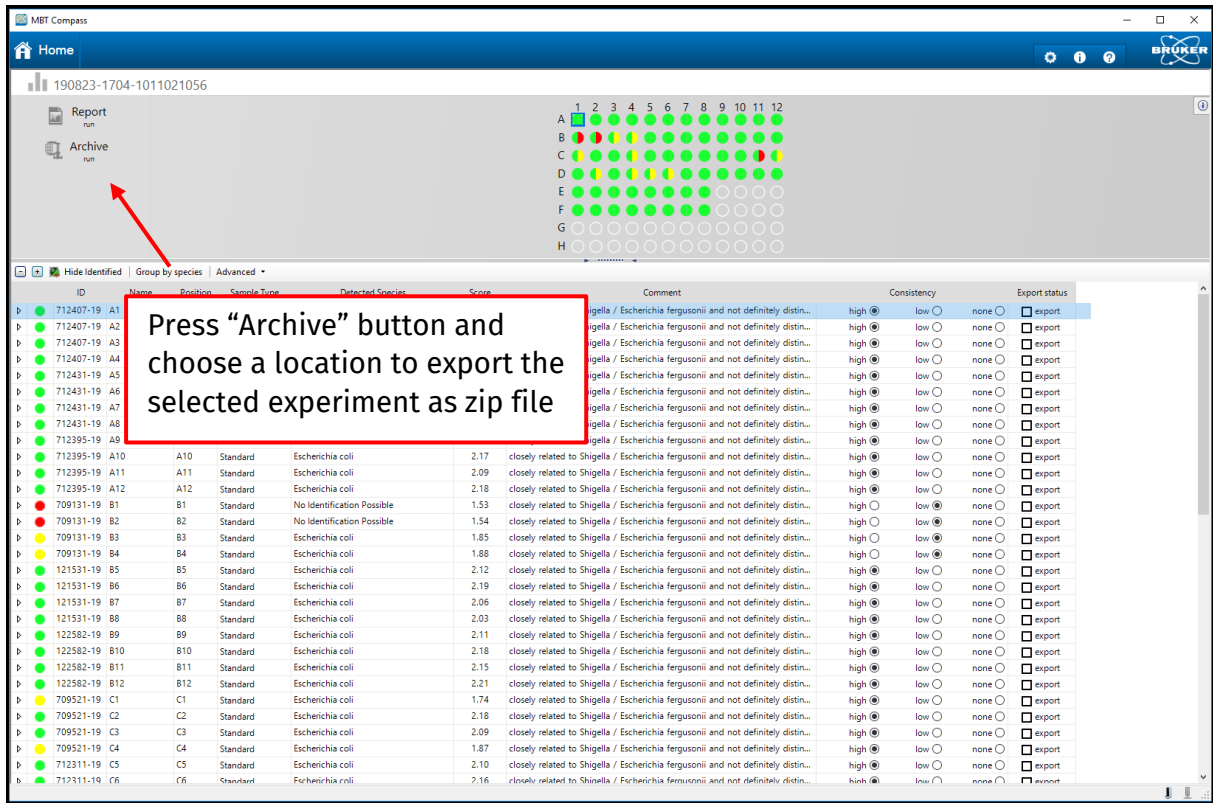
## Guideline for online transmission of Bruker Biotyper MALDI-TOF MS spectra for comparison with the Mabriteccentral database

1. Selection and preparation of spectra for transmission
2. Transmission of spectra via the mabriteccentral website

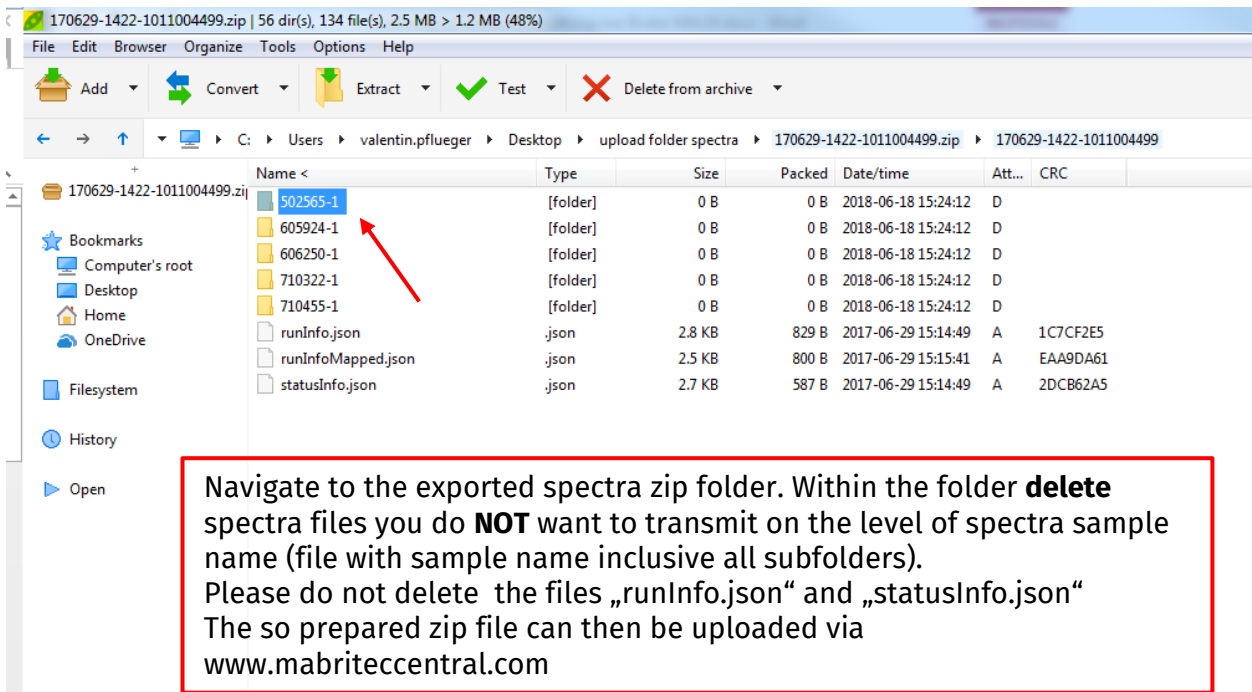
### 1.1 Bruker MBT Compass



### 1.2 Bruker MBT Compass

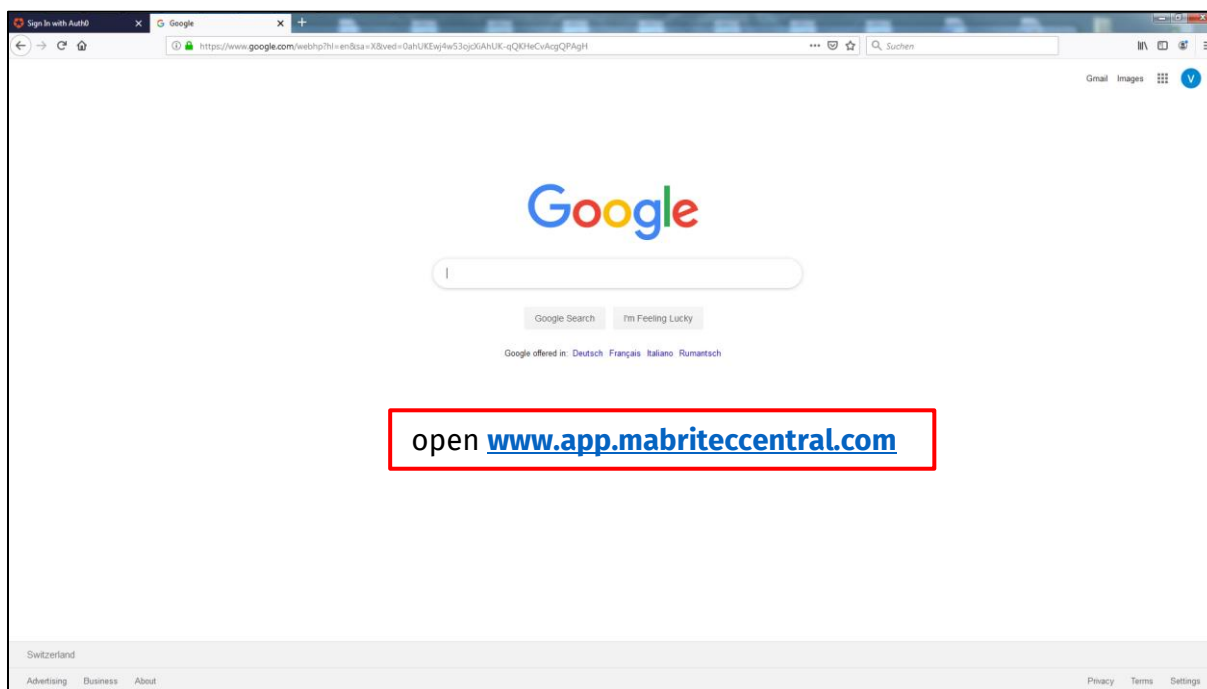


### 1.3 Bruker MBT Compass

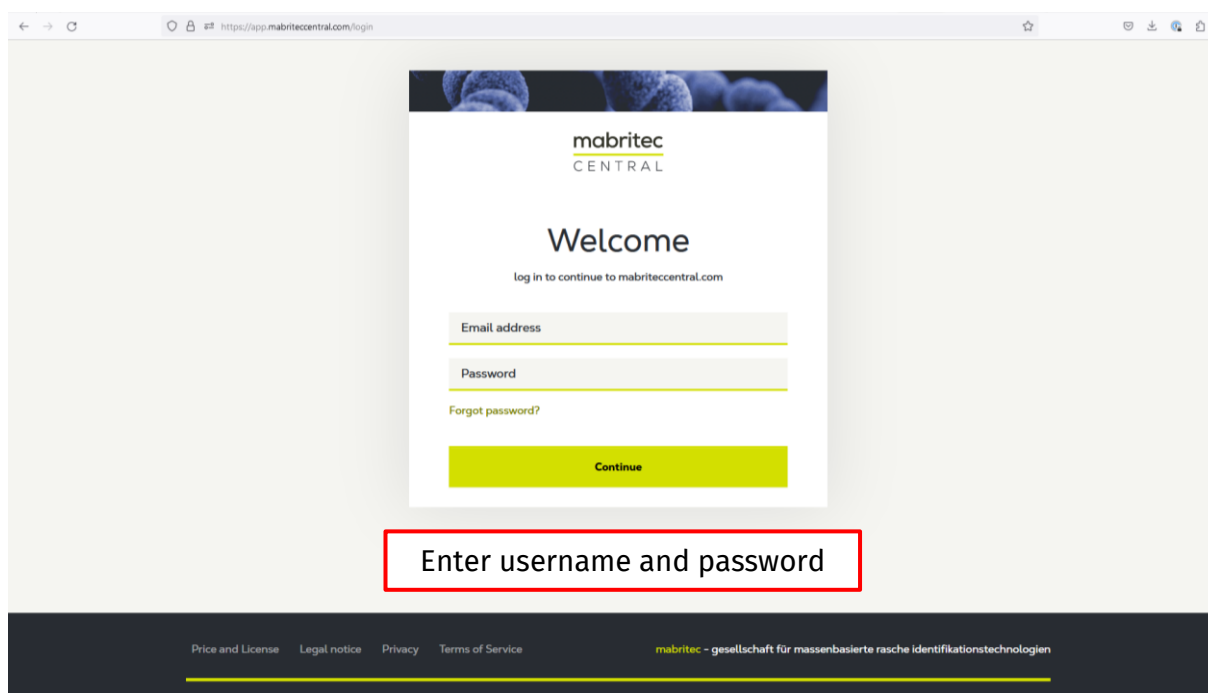


## 2. How to upload Bruker spectra zip file to mabritecentral.com

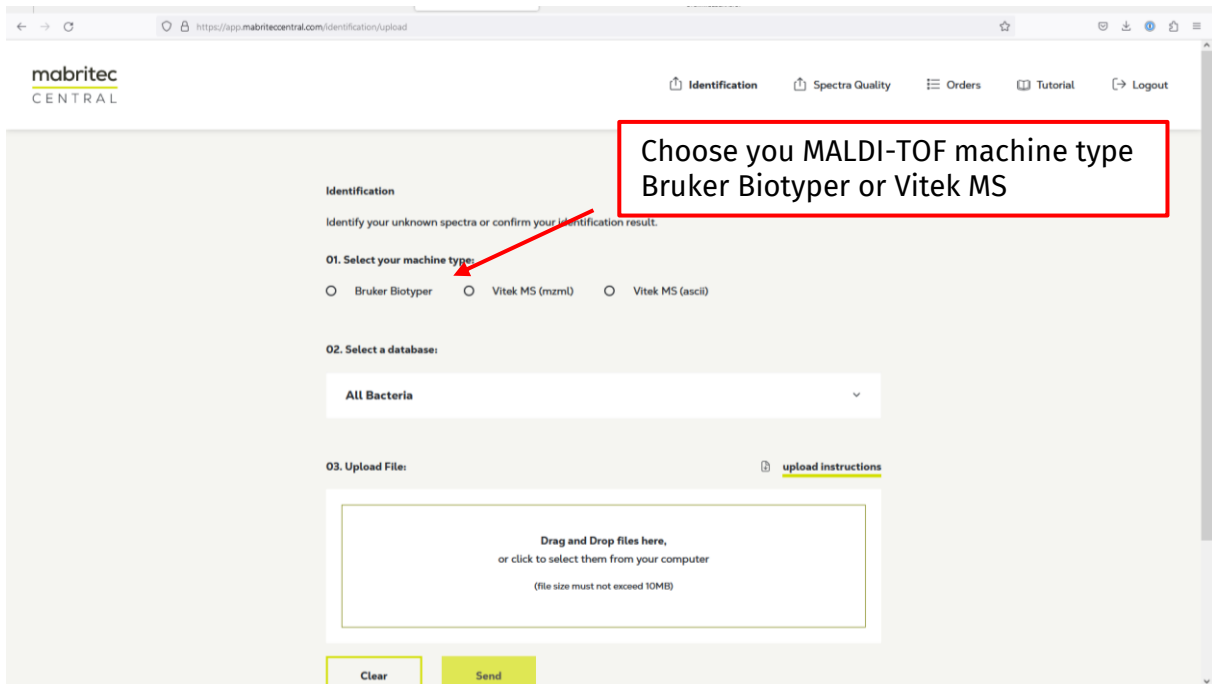
### 2.1 Access mabritecentral.com via browser



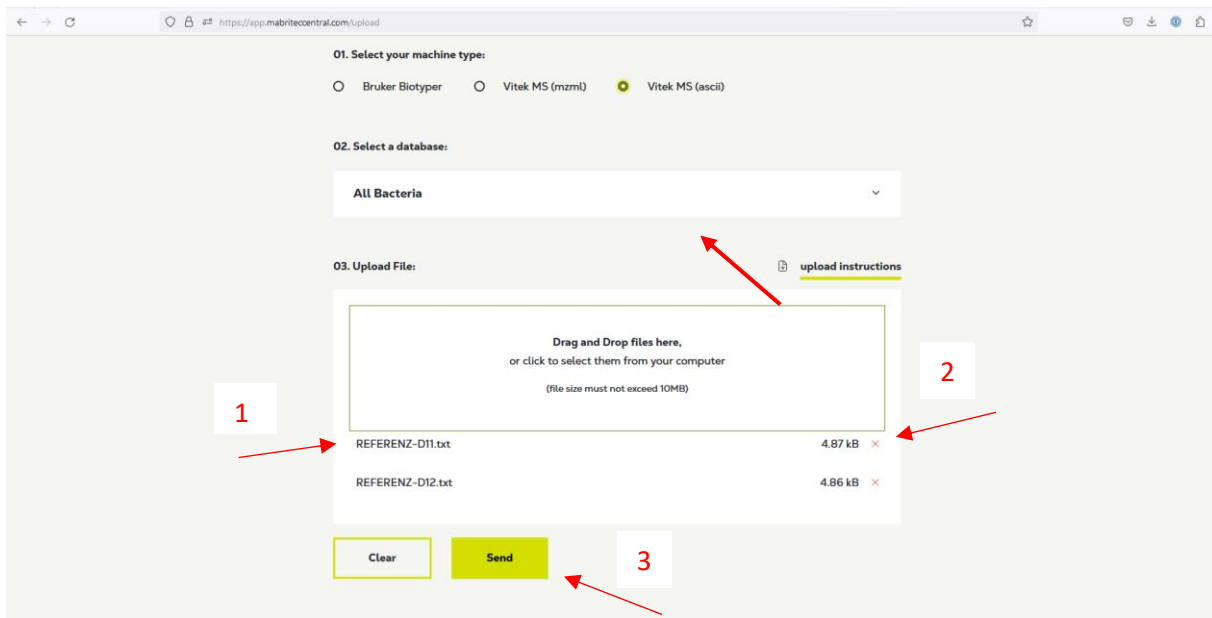
### 2.2 Enter your credentials



## 2.3 Upload your Bruker .zip files



## 2.4 Select/Deselect



1. The selected files are displayed.
2. Files that were selected by mistake can be deleted by means of "delete".
3. Otherwise launch upload and identification by pressing "send".

## 2.5 Results / PDF and CSV export

The screenshot shows the mabritec CENTRAL web interface. At the top left is the logo. The top right has navigation links: Upload, Orders, Tutorial, and Logout. The main content area displays order information: Order ID: 561f4c7e-b041-4af7-892a-f7f9d5a9a651, Order date: 20.3.2023, 11:33:24, Number of spectras uploaded: 8, and Database used: All. To the right of this information are buttons for 'CSV export' and 'PDF export'. Below this is a table with two columns: 'Qualified result' and 'Non qualified result'. The table contains two rows of data, both identifying 'Escherichia coli' as the qualified result and showing a yellow circle with three dashes as the non-qualified result. Each row has a 'more details' button below it.

Filename	Sample Name	Qualified result	Non qualified result
042_Mabritec_AXIMA_I09.mabr_E QA20_0002.2J1.txt	042_Mabritec_AXIMA_I09.mabr_E QA20_0002.2J1	Escherichia coli	---
042_Mabritec_AXIMA_I09.mabr_E QA20_0002.2J2.txt	042_Mabritec_AXIMA_I09.mabr_E QA20_0002.2J2	Escherichia coli	---

Results are displayed as a list and can be exported as a PDF or a CSV file